

Installation instruction

Otta roofing slate square 47 cm x 47 cm

All measurements are for guidance only



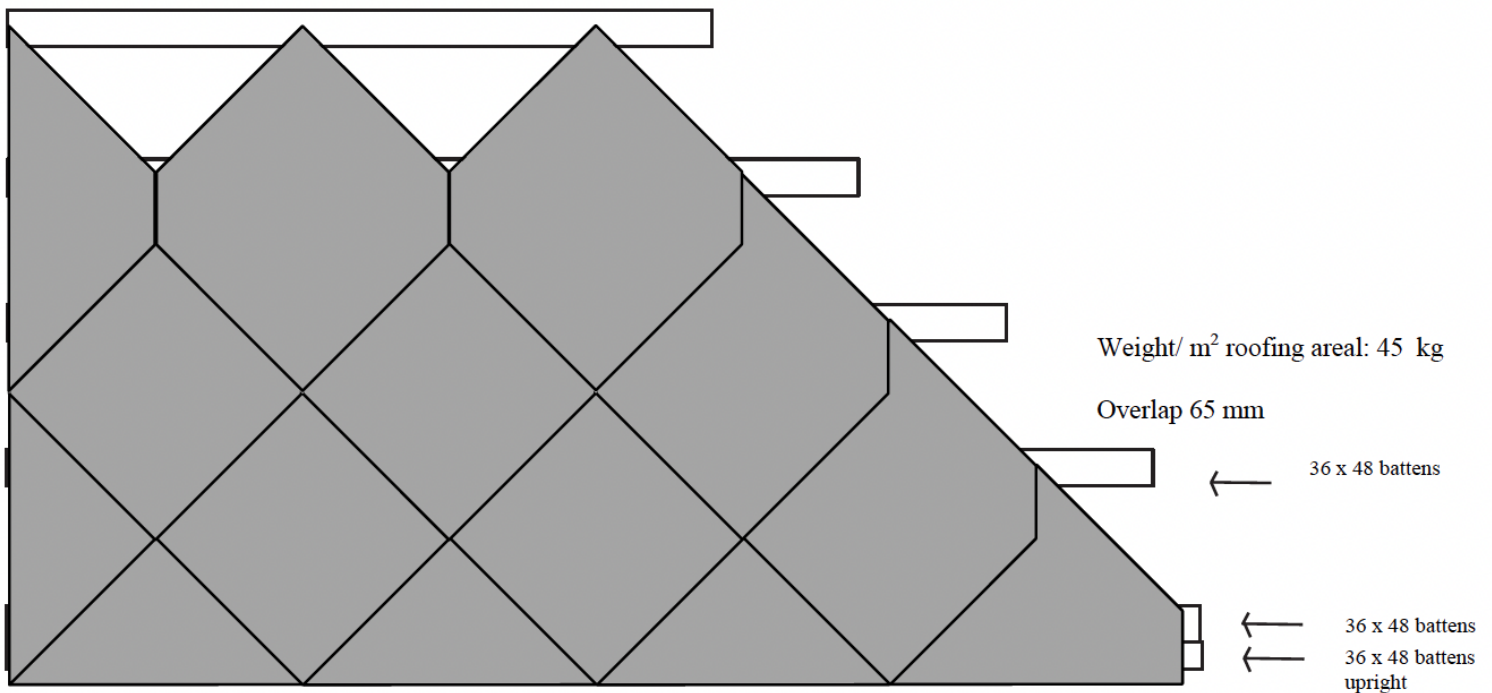
Precise distance between timber battens must be calculated. The distance between battens must be adjusted so that the top batten comes close to the ridge.

Laterally, the roof stone must be distributed so that it ends with a whole or a half stone at both gable ends. The distance between the roofing tiles should be from 7 to 12 mm.

The placement of each stone should be marked to secure accurate lines, horizontally and diagonally.

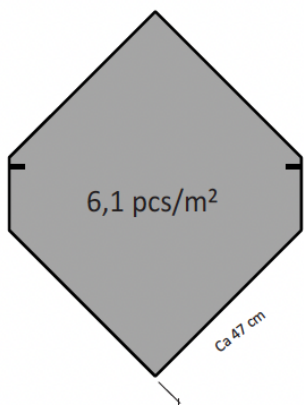
Normal stone and starter stone are delivered with holes for fixing. Stones for ridges and verges are delivered without holes.

Standard thickness of Otta 47 x 47 cm: 12 mm.

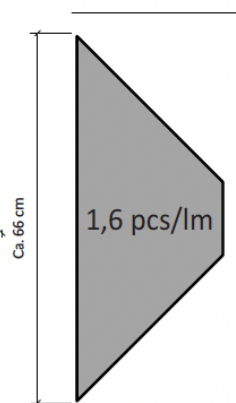


Overhang ca 2 cm

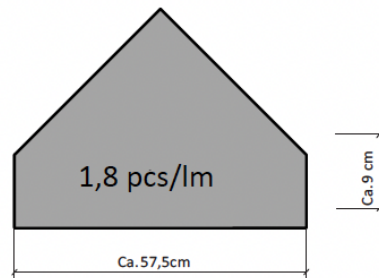
If a larger drip nose is desired, the distance between the first battens where the strip is located, is reduced. It may be necessary to adjust the drip nose to end up with a whole stone on the ridge (this is revealed during the calculation on forehand).



Normal stone



Half stone



Starter stone and top stone (along ridges)

Distance between batten: ca 28,7 cm